

Index No. R-9

# CERTIFICATE OF LOCATION OF GOVERNMENT CORNER

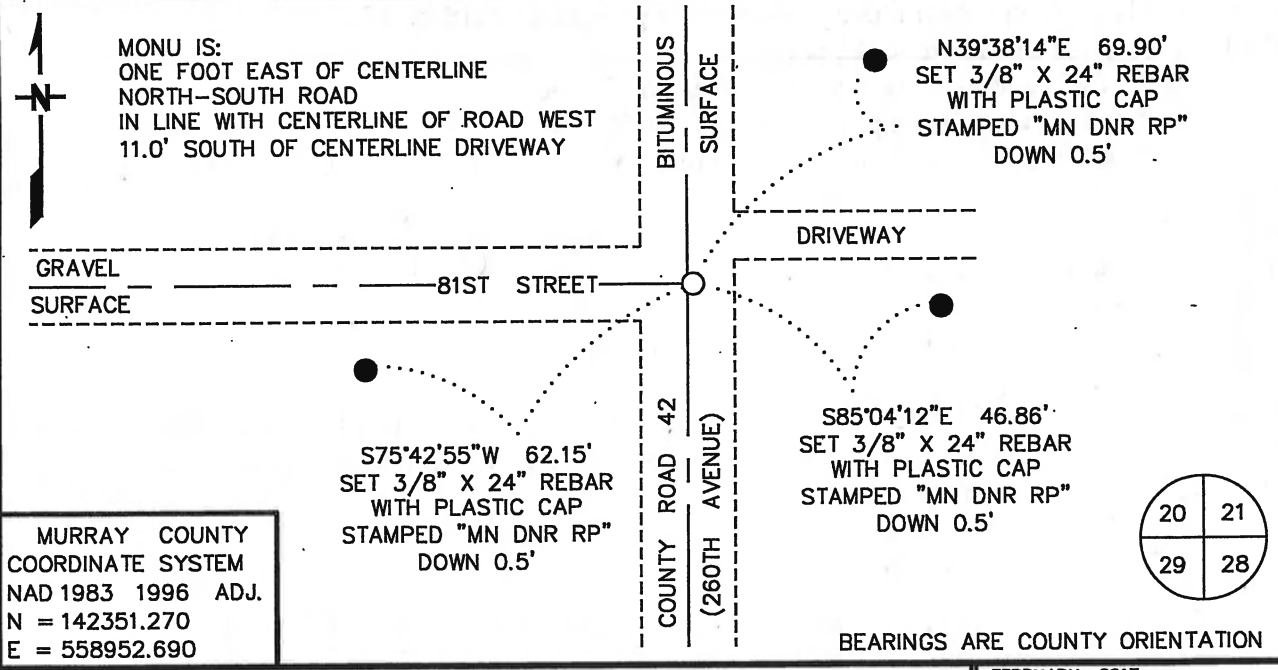
NORTHEAST Corner of Section 29, Township 106 N, Range 39 W  
5TH Principal Meridian, State of Minnesota, County of MURRAY

At the corner location shown on the sketch:

■ On 11/29/16 found a STEEL FENCE POST, DOWN 1.2'  
DATE

■ left monument as found,    □ lowered monument,    □ removed monument (explain)

■ On 11/29/16 Placed a 3/4" X 6" REBAR WITH PLASTIC CAP STAMPED  
DATE  
"MN DNR LS 17003", DOWN 0.5', OVER FOUND STEEL FENCE POST



Statement of evidence for this corner location is on back of this page. FEBRUARY 2017 WMA00384

I hereby certify that this plan, specification, or report was prepared by me or under my direct supervision and that I am a duly Licensed Land Surveyor under the laws of the State of Minnesota.

SIGNATURE Bruce W. Shepherd DATE 3/23/17 License Number 17003  
BRUCE W. SHEPHERD

The DNR Division of Lands and Minerals contacted the following for survey information:

Website - [mngeo.state.mn.us](http://mngeo.state.mn.us)

Website - [murray-countymn.com](http://murray-countymn.com)

Murray County Recorder's Office

Bueltel-Moseng Land Surveying, Inc. of Marshall

Zieske Land Surveying Inc. of Windom

Madsen Land Surveying Inc. of Fairmont

United States Department of the Interior Fish and Wildlife Service

- 1861 U.S. General Land Office notes, obtained from [mngeo.state.mn.us](http://mngeo.state.mn.us), show the corner marked with a post and a charred stake in a raised mound with trench and pits as per instructions.
- 1896 September, A Surveyor's Record Book, page 61, by J.W. Woolstencroft, obtained from the County Recorder's Office, which is also on Website [murray-countymn.com](http://murray-countymn.com), shows a government mound at the corner.
- 1908 Plat Books for Des Moines River Township, obtained from the County Recorder's Office,  
1926 show roads east-west-south in the area of the corner, a property division is also shown to the north.
- 1972 March 24, A Surveyor's Record Book page that shows Section 20, T106N, R39W, obtained from [murray-countymn.com](http://murray-countymn.com), states the following about the corner:  
"Placed 9 inch steel fence post above large pointed field stone"  
The following ties are shown to the corner:  
R.P, N&C, corner fence post, northwest, 62.29 feet  
R.P, N&C, south brace post, northeast, 34.51 feet  
R.P nail in 2 by 2 hub, southwest in power pole line at corner of field, 63.72 feet
- No Construction Plan Sheet 6 of 36 for CSAH No 42, obtained from the County Highway  
Date Department, shows a field stone 2" below the surface at the corner. The corner is shown:  
at Station 263+85.3  
at the intersection of the center line of roads north-south-west
- 1987 March 5, a Certificate of Survey in the E1/2 of the SW¼ of Section 20. T106N, R39W, by Timothy P. Bell, LS 16093, obtained from Madsen Land Surveying Inc. shows that a County I.P. was found at the corner. The corner is shown:  
2684.03 feet from the north quarter corner of Section 29  
5368.06 feet from the northwest corner of Section 29
- 2016 November 29, the DNR Division of Lands and Minerals found a steel fence post down 1.2 feet at the corner. Searched for but found no evidence of the record ties. The found steel fence post was found to be:  
1 foot east of the center line of north-south CSAH No 42  
in line with center line of road west  
11.0 feet south of the center line of driveway east  
2655.43 feet from the east quarter corner of Section 20  
2699.36 feet from the north quarter corner of Section 29  
5369.33 feet from the northwest corner of Section 29

Northeast Corner of Section of Section 29, Township 106 North, Range 39 West  
Page 2 of 2

Analysis of the above information led the DNR Division of Lands and Minerals to conclude that the found steel fence post, which was set in 1972 over a large pointed field stone marks the best evidence of the location of the corner. A  $\frac{3}{4}$  inch by 6 inch rebar with a plastic cap stamped "MN DNR LS 17003" was set over the found steel fence post and ties were taken to it as shown on the sketch of reference ties.